

UNSHIELDED SMD POWER INDUCTORS / FPI TYPE

FEATURES

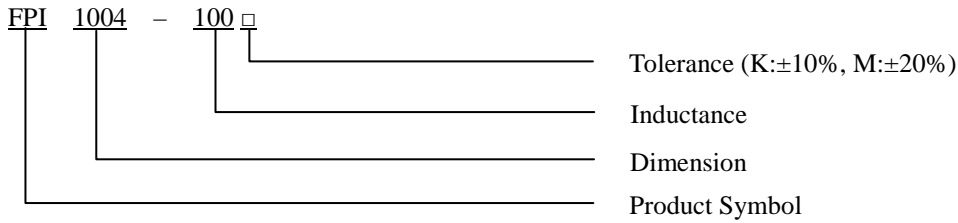
- ◆ Silver Plated Type
- ◆ High power and high saturation
- ◆ Ideal inductors for DC/DC conversion



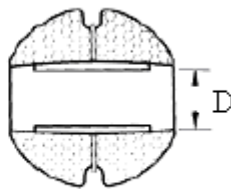
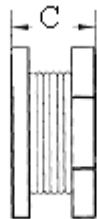
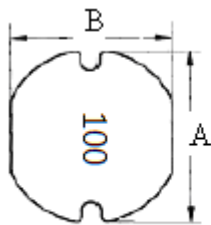
APPLICATIONS

- ◆ Power supply for VTRs.
- ◆ Portable communication equipment.
- ◆ Notebook PCs.
- ◆ LCD televisions.
- ◆ DC/DC converters, etc.

ORDERING CODE



DIMENSIONS (UNIT: mm)



A	10.0 ± 0.3	m/m
B	9.0 ± 0.3	m/m
C	4.0 ± 0.3	m/m
D	3.1 (REF)	m/m

UNSHIELDED SMD POWER INDUCTORS / FPI TYPE

ELECTRICAL CHARACTERISTICS FOR FPI1004

Part No.	Inductance (uH)	RDC (Ω)	IDC (A)
FPI1004-1R2 □	1.2	0.022	9.00
FPI1004-6R8 □	6.8	0.040	5.00
FPI1004-100 □	10	0.065	3.80
FPI1004-150 □	15	0.080	3.20
FPI1004-180 □	18	0.090	3.10
FPI1004-220 □	22	0.110	3.00
FPI1004-270 □	27	0.120	2.50
FPI1004-330 □	33	0.140	2.10
FPI1004-390 □	39	0.150	2.00
FPI1004-470 □	47	0.170	1.80
FPI1004-680 □	68	0.260	1.50
FPI1004-101 □	100	0.320	1.40
FPI1004-221 □	220	0.770	0.80
FPI1004-331 □	330	1.150	0.95
FPI1004-471 □	470	1.600	0.55
FPI1004-561 □	560	1.700	0.50
FPI1004-102 □	1000	3.500	0.45

* 100uH 以上 Test Frequency : 1KHZ/1V

* 100uH 以下 Test Frequency : 2.52MHZ/1V

CORE MASTER ENTERPRISE CO., LTD.

<http://www.coremaster.com.tw>

